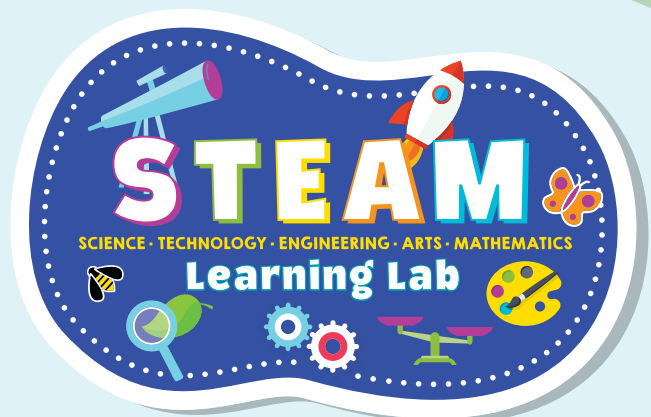



**Can you see
the scientists
of the future?
WE CAN**





With the support of generous donors, we have transformed our second floor into a bright new STEAM Learning Lab! In it, Hartford's youngest children can engage in hands-on educational activities, develop critical thinking, enhance their love for learning, and build foundational skills toward careers in STEAM (science, technology, engineering, arts, and mathematics).

Opened in January 2023, the learning lab is the latest exciting enhancement to the nationally-accredited Women's League Child Development Center. Founded in 1917, it is the largest single-site early education center in Greater Hartford, with capacity for 240 infants and young children.

THE STEAM LEARNING LAB:



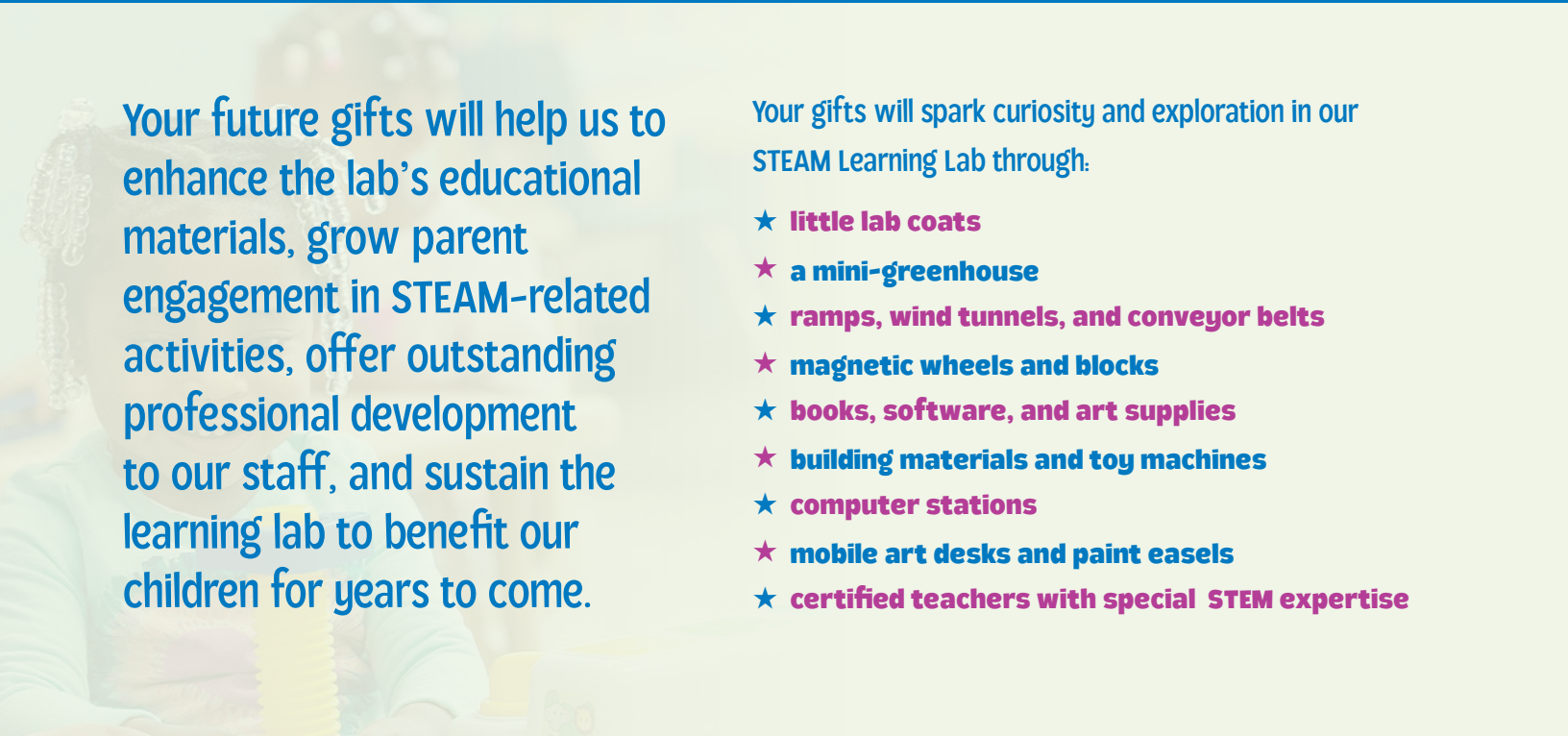
Gives children the joy of learning about insects, butterflies, seeds, soil, ramps, weather, machines, planets, construction, and much more.



Gives Hartford's children — regardless of their family's income — the same access and opportunity as their suburban counterparts for STEAM foundational learning.



Nurtures the Black and Brown scientists, technology professionals, engineers, and mathematicians of tomorrow — currently severely underrepresented in STEAM careers (which offer the most opportunities and income!)



Your future gifts will help us to enhance the lab's educational materials, grow parent engagement in STEAM-related activities, offer outstanding professional development to our staff, and sustain the learning lab to benefit our children for years to come.

Your gifts will spark curiosity and exploration in our STEAM Learning Lab through:

- ★ **little lab coats**
- ★ **a mini-greenhouse**
- ★ **ramps, wind tunnels, and conveyor belts**
- ★ **magnetic wheels and blocks**
- ★ **books, software, and art supplies**
- ★ **building materials and toy machines**
- ★ **computer stations**
- ★ **mobile art desks and paint easels**
- ★ **certified teachers with special STEM expertise**

Our preschool classroom teachers participated in the national pilot of a preschool science curriculum. Equipped with that learning, we have transformed our second floor (previously a storage space!) into a state-of-the-art, child-focused STEAM lab.

What does it take to excel in early education? **WE'VE GOT IT**

1 We meet or exceed the highest standards set by the National Association for the Education of Young Children — we've been accredited since 1991!

2 We employ college-educated, certified, highly-trained teachers who continuously learn. Many have been with us for decades.

3 Our many distinguished alumni are a testament to our standard of excellence. They include New England's first popularly elected Black mayor, Thirman Milner, Connecticut State Treasurers Shawn Wooden and Denise Nappier, and the chair of Manchester's Board of Education, Darryl Thames, Sr.

4 Our state-of-the art building, classrooms, and outdoor spaces are chock-full of stimulating educational activities. A STEAM lab will complement those.

5 Active inquiry-based teaching and learning are central to our approach.

6 Our families are children's greatest teachers so we wrap them in support, giving them the tools they need to nurture their children along with us.

7 Classroom technology keeps our parents and guardians engaged in their child's learning — in real-time! — using apps like SeeSaw and Sparkle.

8 Our roots are deep in Hartford. African American minsters' wives founded Women's League more than a century ago. Their entrepreneurial legacy of caring and excellence endures today in our Center. Cherished by the community, we've educated thousands of Hartford children.

9 We measure progress and learn from it. Our STEAM lab includes careful data collection. By comparing it against standards from the Office of Early Childhood and the City of Hartford, we track our children's growth and improve on our methods.

10 For children at Women's League, learning and health go hand-in-hand. Advanced safety protocols include a full-time nurse, hand washing stations and hand sanitizing stations at each classroom, body temperature scanning, and two ZONOS sanitizing systems for daily cleaning of toys and objects.

The time is **NOW** to close the opportunity gap for children of color and STEAM

- **In the next decade, an estimated 75% of jobs in the fastest growing industries will require a background in science.** Yet, Black and Latino people are severely underrepresented in science, technology, engineering and math careers. Without high-quality STEM instruction, children of color are “locked out” of the jobs offering the most opportunity and income.
- **Research shows that children exposed to science, technology, engineering and math develop greater critical thinking skills, creativity and problem-solving abilities.** These skills expand into other subject areas and set up future academic success.
- **In surveys, our families indicated their support** for relevant, engaging, learning experiences that provide “a leg up” for children by the time they enter elementary school.
- **A child’s greatest brain development occurs by age five.** That’s why early education has an enormous impact on the growth, development and future success of children.
- **A child’s zip code should never be a barrier to a quality education.** A STEAM lab at Women’s League is a step toward eradicating the wealth and racial disparities often facing people of color. Many of our families are working to overcome poverty.

Ready to give the gift of STEAM education?



We **gratefully accept charitable donations** via cash, check, or credit card.



Grants from **donor-advised funds** are also welcome. We can provide you with our tax ID number in order to make your gift.



Giving online is easy at **womensleaguecdc.org/donate** or mail your check to us at **1695 Main St., Hartford, CT 06120.**



We are a 501(c)(3) nonprofit organization. All contributions to Women’s League are **tax-deductible.**



Contact:

Ms. Karen Lott
Executive Director
860-524-5969
klott@womensleaguecdc.org
womensleaguecdc.org/Give-STEAM

Major philanthropic partners to date include
Stanley Black & Decker,
AT&T Foundation, Jane Torrey,
The Farmington Bank Community Foundation,
Vantis Life Insurance Co., and many others!